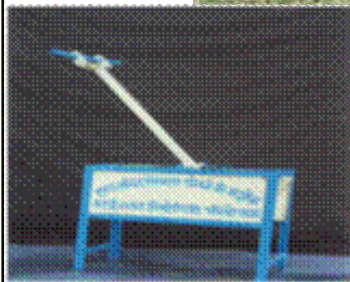




எனது &1

1 ஁Bu dh fo' k'V; ற் dR; , ஁ dr஁



2-1 ey mnæs; %

fn e/; inšklVV , xsb.MLVt MgyieV dkiž'sku fyfeVM dsey mnæs; dsey mnæs; bl izlkj gS%

§ df'k mRi knu eaof) , oavk/fud rduhd mi yC/k dj kuk A

§ l gk d , oal Ei yvd [kk|kU dh of) , oami Yk/krk ea; sknku A

§ df'k vk/fjr m | skk dk fodkl A

2-2 fuxe dk ?; s

fuxe d"kladh mRi kn , oamudh vk; eaof) gk bl grqvi uh fofHU xrfof/k, lal pkfyr djrk gSA d"kladst k mRi knu gkrsgSml eaof; w, Mi ku grqdf'k ij vk/fjr m | sk dh LFki uk eaHh l g; sk fd; k t krk gSA

2-3 fuxe dk bfrgkl , oabl dsxBu dk i x %

fn e/; inšklVV , xsb.MLVt MgyieV dkiž'sku fyfeVM dh LFki uk dEi uh vf/fu; e 1956 dsvUrxZ fnukd 21 epZ1969 dsk dh xbZgSA fuxe dh vf/kdr vaki v h : - 500-00 yk[k gS, oa inRr vaki v h : - 329-49 yk[k gSA inRr vaki v h eal sHjir ljdkj dk vak : - 120-00 yk[k , oa jkt; 'kl u dk vak : 209-40 yk[k gSA

2-4 fuxe dsdr %

fn , e-i hLVV , xsb.MM-dkiž fy- } jk dHz, oae-iz'kl u } jk t kHh d"kladsfgr dsfy, ; k uk afuxe dknh t krh gSml dsl Qy fdz kb; u@ fn; sx; snk; Rk dk fuozu fd; k t krk gS A

2-5 fuxe dseq; dR; %

fu; fer df'k l ok, v& foi .ku dk; Z%

§ jkl k fud mozd A

§ ; ahdar df'k & VDVj iWj fVyj] iEi l v] df'k midj.k Vid fl pkZ; aA

§ išk l j{k k fV' ; wdYpj] gbZcM cht @išk foi .ku A

§ Vy fdV] rky dk\$ iDyuj] fMLVkuj A

§ df'k midj.k Vsyj] Vslj] ck sk\$ LVhy Me& fueZk , oaink A

§ fMfyx e'kku Mkt j] t sl hch bR; kn e'khusfdjk sij l ok, ami yC/k dj kukA

2-6 vU; dk; Z%fuxe ds vU; nk; Rb %&

- § Leky QkjeZ , xh fct ul dU kVZe& e/; i nšk bdkbZdk l pkyu A
- § Hkjr ljdkj ds [k| iz Ldj.k m|sx ea-ky; dh jkT; ukMy , t l h A
- § i nšk ead f'k fu; kZ t ku fdz kb; u grqukMy , t a h A
- § , fi Mk dk i nš'kd opzy dk kZ; A
- § I; kt fu; kZ dsfy; svf/kdr LVV dsusy kof t x , t l h A
- § jk'Vh; ck, sx\$ fodkl ; kt uk varxZ ck, sx\$ LFki uk grqukMy , t l h A
- § efgyk , oacky fodkl foHkx dh vlxu ckM; kadsfy, i ksk k vlgkj mRi knu , oa forj. kA
- § e/epD[h ikyu ; kt uk& jkT; 'kl u dh ukMy , t l h A
- § i nšk dsdf'k dk; Zde eafolrkj grqdk iZV dk l g; sx l eb; , oamuds }kj k iz Ldj.k@fu; kZ grqmikt Z & dkVdV QkfeZ grql eb; A

2-7-1 izkl fud l j puk&

- § fuxe eq; ky; Hki ky
- § {s-h; dk, kZ; & Hki ky 1/2 Hki ky}& gsk xkcn , oal kxj l Hkx 1/2 mTt Si 1/2 Hkx , oa mTt Si l Hkx 1/2 kfy; j 1/2 kfy; j , oapEcy l Hkx 1/2 t cyij 1/2 cyij , oajhok l Hkx 1/2
- § ft yk dk, kZ; 38
- § 'kk[kk dk, kZ; 9

2-7-2 fuxe }kj k l pkyr mRi knu 1/4 a a 1/2 bZkb; ka&

- § i ksk k vlgkj l a a & ckMh , oa/kj
- § t sod [kn l a a 1/2 uxjh; vof'kV l s& Hki ky@Xokfy; j
- § t hok kq [kn 1/2 Ypj 1/2 l a a & Hki ky
- § dhWuk'kd l a a chuk
- § 'lgn 'kku l a a ejšik
- § ; k=dh df'k iz k= ckbZ

2.8 fuxe dh dk; Z{krk c<kus grqt u l g; sx dh višk, a

fn , e-i hLVV , xsb UMLVt MoyieV dki kZ fy- l nš t u l g; sx dh višk djrk gSA

2.9 t u l g; ~~ks~~ l fuf' pr djusdsfy; sfof/k@Q oLFkk

t u l g; ~~ks~~ l fuf' pr djusdsfy, fuxe 'kk u }kjk l e; &l e; ij vk; ~~kt~~ r df" k eyks, oa  
 l ~~ak~~'B; ~~ka~~afuxe }kjk ~~Hkx~~ fy; k t krk gSrFkk t ks Hh l q-ko vkrs gSml ds vuq kj dk; ~~Zkgh~~ dh  
 t krh gSA fuxe dsl pkyd e. My eaHh l pkyd ds: i est u i r fuf/k ds i ea'kk u }kjk  
 l pkyd eu ~~kur~~ fd; st krs gSft l l sfd fuxe ds viuk l g; ~~ks~~ feyrkjgsA

2-10 t u l g; ~~ks~~ ds vuqJo.k , oaf' kdk; r ~~ks~~ ds fujkdj. k dh Q oLFkk

t u l g; ~~ks~~ ds vuqJo.k , oaf' kdk; r ~~ks~~ ds fujkdj. k gr qe[; ky; ] {~~ks~~-h , oa'kk [kk Lrj ij  
 vf/kdkj; ~~ka~~ }kjk dk; ~~Zkgh~~ dh t krh gSA

2-11 e[; dk; ~~ky~~; r Fkk foHku Lrj ~~ka~~ ij dk; ~~ky~~; ~~ka~~ ds irs

fuxe dse[; ky; ] {~~ks~~-h dk; ~~ky~~; ~~ka~~ } mRi knu bdk ~~bZka~~ r Fkk ft yk dk; ~~ky~~; ~~ka~~ ds irs i ~~fl~~ rdk ds i "B  
 d ~~ka~~ ij of. ~~kt~~ fd; sx; sgSA

2-12 dk; ~~ky~~; [kyus, oacn gks dk l e;

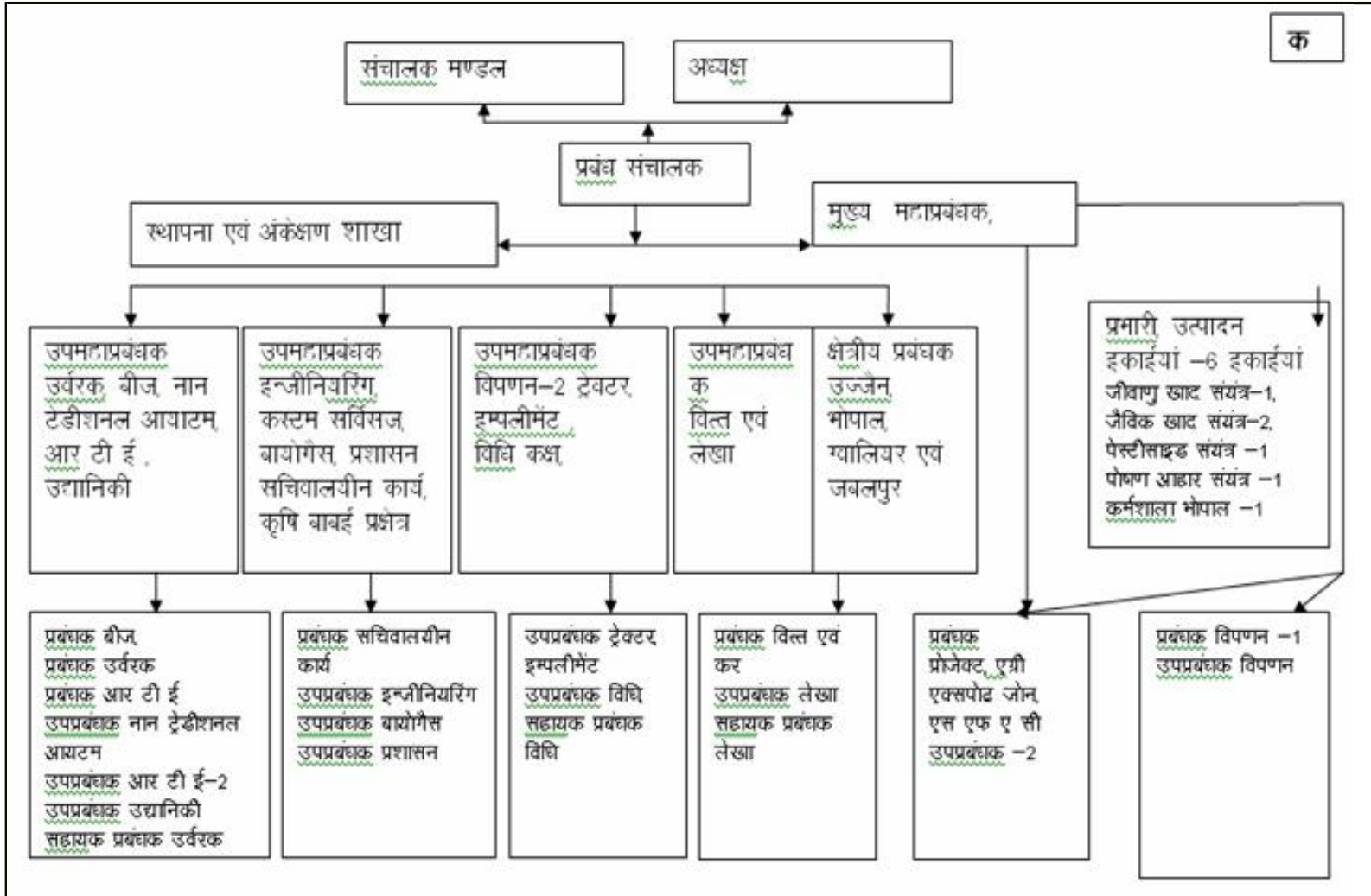
<del>dekd</del>	dk; <del>ky</del> ; dk uke	[kyus dk l e;	<del>Hk</del> u vodk'k	cn gks dk l e;
1	e[; ky; , oa { <del>ks</del> -h dk; <del>ky</del> ;	i <del>kr</del> % 10-30 ct s	nki jg 1-30 l s 2-00 ct s rd	l k, a5-30 ct s
2	ft yk dk; <del>ky</del> ; , oamRi knu bdk <del>bZka</del>	i <del>kr</del> % 09-30 ct s	nki gj 1-00 l s 2-00 ct s rd	l k, a5-30 ct s

ed; dk; ky; rFk fofHku Lrjkaij dk; ky; kadsirs

dekd	dk; ky; dk ule		njHk'k 1/2k1/2	dk; ky; dk irk
1.	ed; ky; ih ch, Dl v/; {k izak l pkyd	0755	2551967 2551736 2551807	rrh ry] ipkuu Hou] ekyoh uxj] Hki ky
2.	{le-lr dk; ky; Hki ky&l kxj	0755	2757400	, xk dkei ydl ] bhz gh Hki ky
3.	{le-lr dk; ky; mTt Si	07582	2510313	dkBh jkM mTt Si eoi 0
4.	{le-lr dk; ky; bhl\$	0731	2380736	, e vkt h ykbZ ] /kj ukdk dsikl ] bhl\$
5.	{le-lr dk; ky; Xofy; j	0751	2342017	135&, ] e; jv uxj] FkVhi g] Xofy; j
6.	{le-lr dk; ky; t cyig	0761	2417343	1114@1&, ] ; kno dkyksh t cyig
7.	{le-lr dk; ky; l ruk 1/2hok1/2	07572	257279	fcjy jkM vkbZVl0vkbZ dscxyk l ruk eoi 0
8.	t hok kq [kn l a= Hki ky	0755	2756142	, xk dkei ydl ] bhz gh Hki ky
9.	t fod [kn l a= Hki ky	0755	2732291	Hkuij p\$lgk Hki ky
10.	t fod [kn l a= Xofy; j	0751	2426326	135&, ] e; jv uxj] FkVhi g] Xofy; j
11.	deZkyk bhz gh Hki ky	0755	2757400	, xk dkei ydl ] bhz gh Hki ky
12.	i ksk k vlgj l a= ckMh	07486	263408	i ksk k vlgj l a=] ckMh ft yk jk l si eoi 0
13.	dlVuk'kd l a= chuk	07580	222037	b.MLVh y LVV] chuk eoi 0
14.	; k=dh df'k i \$le- ckbZ	07574	259436	df'k ; k=dh i \$le- ckbZft yk gsk kckcn
15.	ft yk dk; ky; Hki ky	0755	2735669	i qyhpj fl Ukh dkyksh c\$fl ; k jkM-
16.	ft yk dk; ky; fofn'kk	07592	233181	ft yk/; {k dk; ky; dsikl ] fon'kk eoi 0
17.	ft yk dk; ky; jk l si	075482	222147	vt q uxj frjlgk , eoi l0bZch dsl keu\$ l kxj jkM jk l si
18.	ft yk dk; ky; l hgs	07562	224061	cl r Hou ufl z gke dsikl xak vkJe] bhl\$ Hki ky jkM l hgs
19.	ft yk dk; ky; jkt x<+	07374	232664	, 0cl0 jkM xqk ukdk dsikl ] C; koj ft 0 jkt x<+
20.	ft yk dk; ky; gsk kckcn	07574	254449	vkun uxj] gsk kckcn eoi 0
21.	'kk[kk dk; ky; gjnk	07577		osj gkml dsikl ] gjnk eoi 0
22.	ft yk dk; ky; c\$y	07141	230137	ijkusukds dsikl oelZfcfYMa] dkyki kvk c\$y
23.	ft yk dk; ky; l kxj	07582	247038	MWMIoi l0 frokj h vkbZDylfud dsikl ] fl foy ykbZ] l kxj
24.	ft yk dk; ky; nelg	07812	222862	chxat nelg eoi 0
25.	ft yk dk; ky; i Uk	07732	252162	ft yk vLirky jkM i Uk eoi 0
26.	ft yk dk; ky; Nrji g	07682	243436	dk; ky; ft yk t y fodkl dsl keusNrji g eoi 0

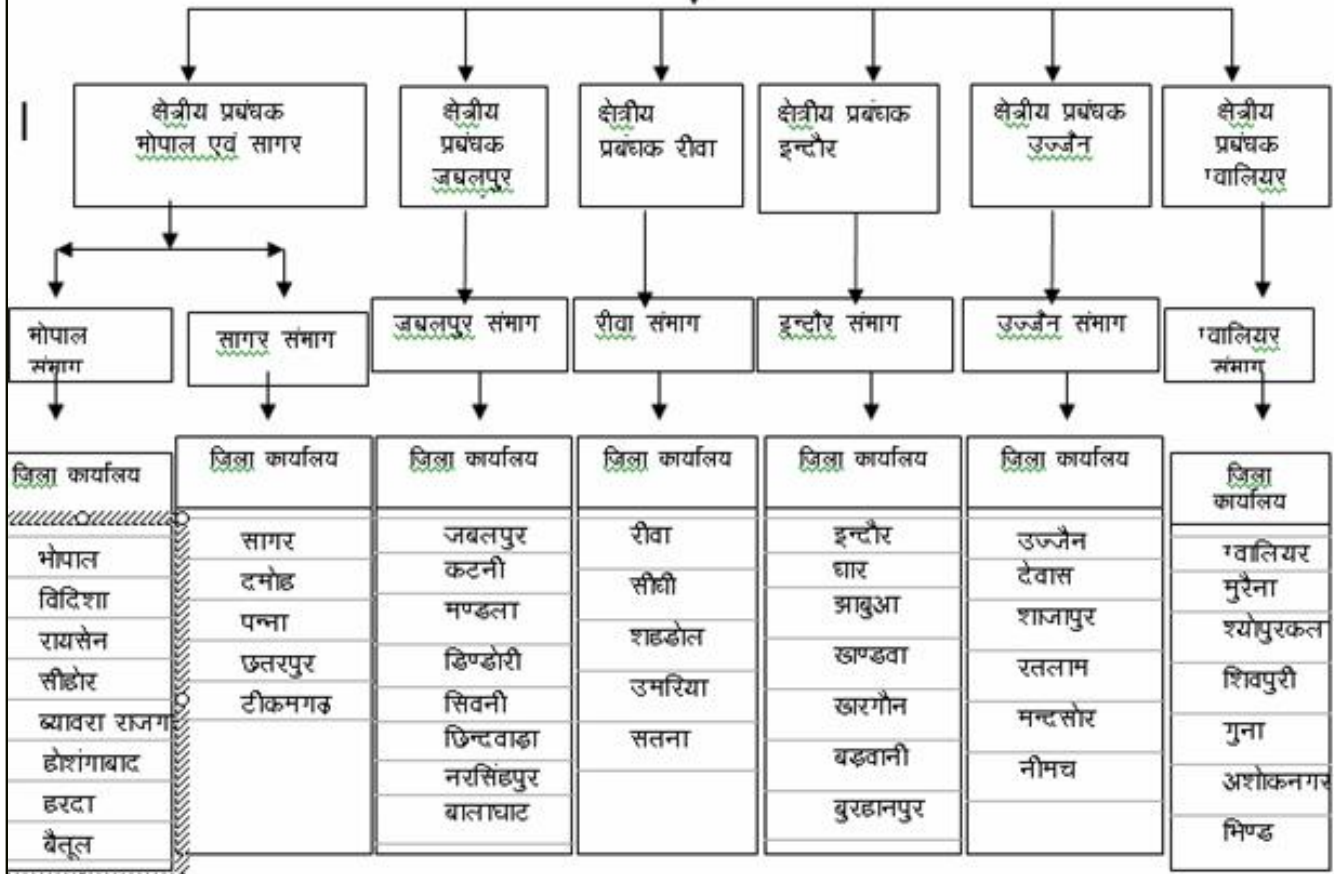
27.	ft yk dk, kzy; Vrdex<+	07683	245265	l qk uxj frjkyk ijkuk Hte l j{k k vf/k
28.	ft yk dk, kzy; mTt si	0734	2550972	dk, kzy; ] ea jkuhi g j kM Vrdex<+
29.	ft yk dk, kzy; nskl	07272	228639	mTt si j kM fdykdj dsikl nky fey i k.k nslk e0i0
30.	ft yk dk, kzy; 'kkt ki g	07364	229457	Vrdh plsgk , 0cl0 j kM 'kkt ki g e0i0
31	ft yk dk, kzy; jryle	07412	267524	dk kkl glwy dsl keus egwulep j kM jryle e0i0
32	ft yk dk, kzy; ehl sj	07422	241394	egwulep j kM eal s e0i0
33	'kk[kk dk, kzy; ulep	07423		df'k mi e.Mh i k.k ygl q e.Mh dsl keus ulep
34	ft yk dk, kzy; bthls	0731	238736	, e vkt h yk bZl ] bthls
35	ft yk dk, kzy; /kj	07292	235063	3] ca y fcgkj] ft yk; {k dk, kzy; } j kM /kj e0i0
36	ft yk dk, kzy; >kcqk	07392	244375	t si eanj dsikl ] bthls j kM >kcqk
37	ft yk dk, kzy; [k Mok	0733	243907	5&ch vkun uxj] [k Mok e0i0
38	ft yk dk, kzy; [kj xks	07282	2248804	j ked".k dkykuk l ukon j kM [kj xks e0i0
39	'kk[kk dk, kzy; cMokuh	07290	224875	efgyk fpfdRl ky; dsihns jkt shzekxZ cMokuh e0i0
40	'kk[kk dk, kzy; cggkui g	07325		cl LVsM dsikl cggkui g
41	ft yk dk, kzy; Xokfy; j	0751	2368308	xkyk dkefhj dsikl Xokfy; j
42	ft yk dk, kzy; ejsik	07532	224407	, 0cl0 j kM t sk [kzejjsik e0i0
43	'kk[kk dk, kzy; '; kig dyla	07530	223409	f'koigh j kM '; kig dyla e0i0
44	ft yk dk, kzy; f'koigh	07492	234101	vukt e.Mh dsikl ] vk; Zl ekt j kM f'koigh
45	ft yk dk, kzy; xqk	07542	251003	ljfdV gml j kM m ku foHx dsikl ] xqk e0i0
46	'kk[kk izUkd] v'kkduxj	07543		df'k mit e.Mh iflj v'kkd uxj
47	ft yk dk, kzy; fhk M	07534	233120	ivsy iEi dsikl cxy eaXokfy; j j kM fhk M e0i0
48	ft yk dk, kzy; nfr; k	07532	235674	cl LVsM dsikl nfr; k
49	ft yk dk, kzy; tcyig	0761	2417430	1005 U; wkn'kZdkyuk t cyig
50	ft yk dk, kzy; dVuh	07622		df'k mit e.Mh i k.k ig: vki uk j kM dVuh e0i0
51	ft yk dk, kzy; e.Myk	07642	251172	fl foy yk bZl vkQl dsikl ] e.Myk e0i0
52	ft yk dk, kzy; fM.Msh	07644		ijkuk fMMsh vejdy j kM fMMsh
53	ft yk dk, kzy; fl ouh	04692	220976	, e ih bZch dk; zy; dsikl fl ouh
54	ft yk dk, kzy; fNuhokMk	07162	225104	ukxi g ukdk pauxk] fNuhokMk e0i0
55	ft yk dk, kzy; ujfl gi g	07792	230622	cl Idy dsl keus dnyk ujfl gi g e0i0
56	ft yk dk, kzy; ckyk?kV	07632	243984	ekrh xkV dsl keus ikyhVdfud j kM ckyk?kV

57	ft yk dk k; jhk	07662	221599	edu u&7@287] gkÅfl x ckMzdkykllj cknk ckx] jhk
58	ft yk dk k; l h/h	07822	252314	ou foHkx ds i hNs, oaykd fuekZk foHkx dseq; LVkj dsl keu\$ dk rjdyk l h/h
59	ft yk dk k; 'lgMky	07652	240327	i t kch xq }kj k ds i k l   gg- , fj; k 'lgMky
60	ft yk dk k; mefj; k	07653	275226	d".k mit e.Mh i kx. k mefj; k e0i0
61	ft yk dk k; l ruk	07572	257279	fcjyk jkM] vk0Vl0vkb0 dscxyk l ruk e0i0



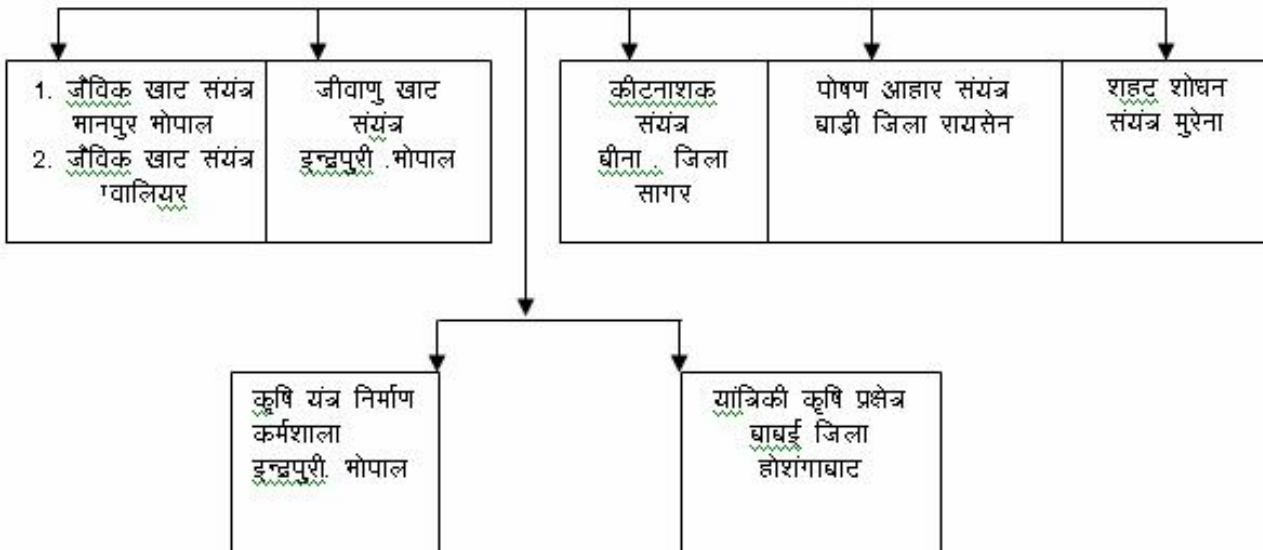
निगम मुख्यालय के अधीनस्थ कार्यालय

ख

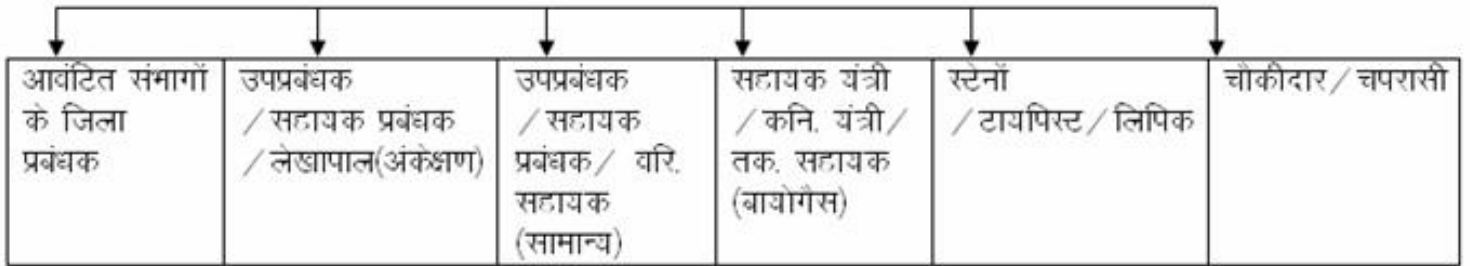


ग

निगम मुख्यालय के अधीनस्थ उत्पादन इकाईयां

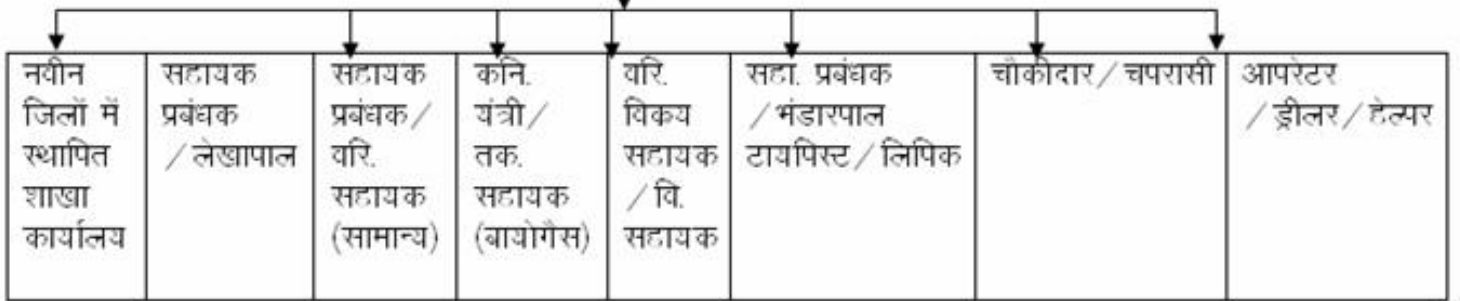


क्षेत्रीय प्रबंधक



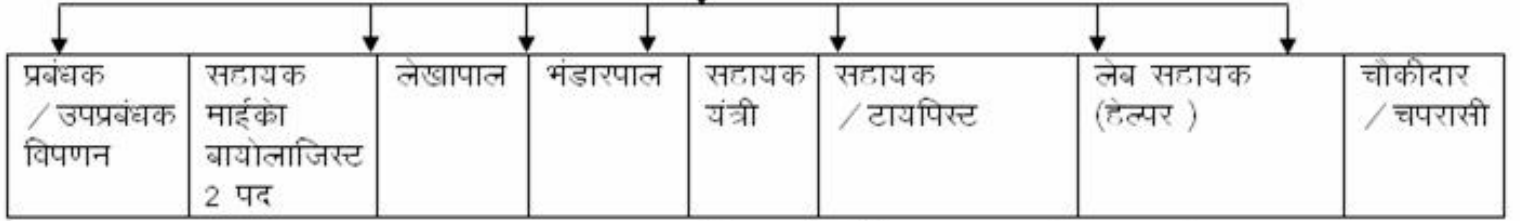
निगम के जिला कार्यालयों का संगठनात्मक स्वरूप

जिला प्रबंधक



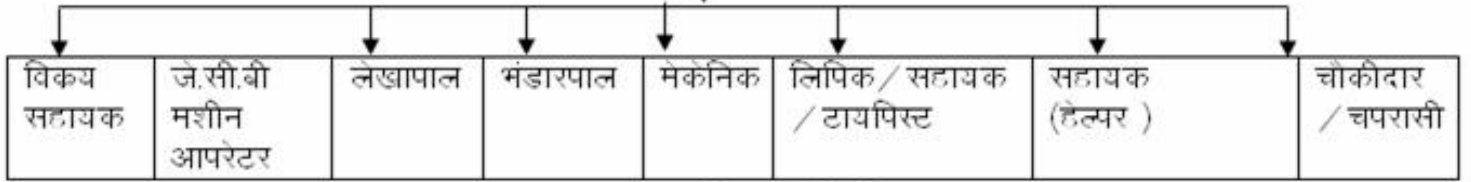
**निगम के जीवाणु खाद संयंत्र का संगठनात्मक स्वरूप**

प्रभारी प्रबंधक स्तर का



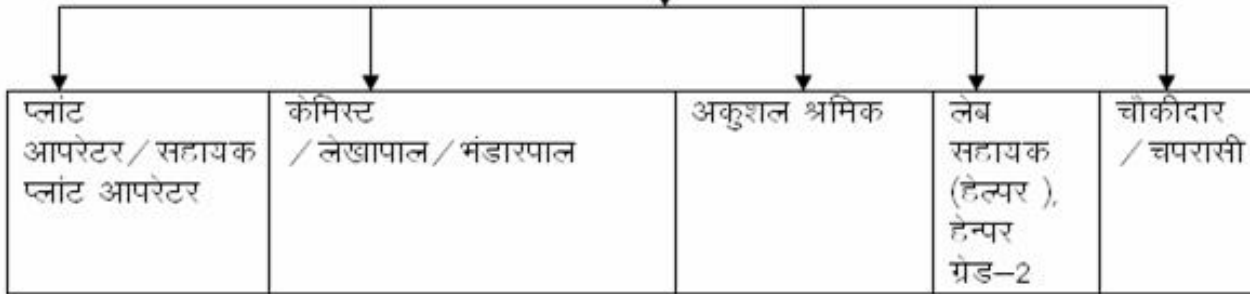
**निगम के जैविक खाद संयंत्र का संगठनात्मक स्वरूप**

प्रभारी सहायक प्रबंधक स्तर का



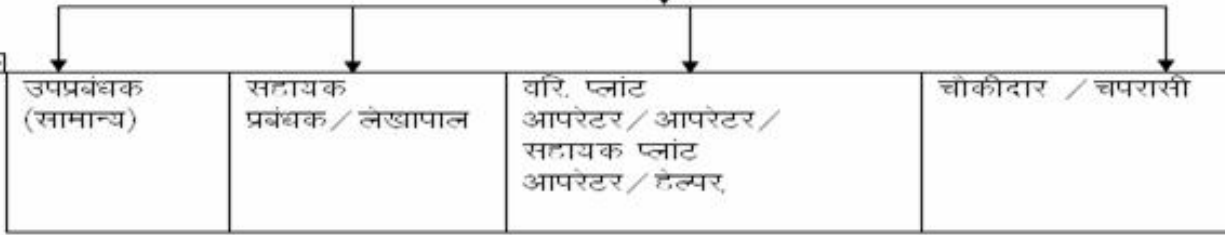
**निगम के कीटनाशक संयंत्र का संगठनात्मक स्वरूप**

प्रभारी प्रबंधक स्तर का



निगम के पोषण आधार संयंत्र का संगठनात्मक स्वरूप

प्रभारी उपप्रबंधक स्तर का



निगम के यांत्रिकी कृषि प्रक्षेत्र बाबई का संगठनात्मक स्वरूप

प्रभारी प्रबंधक स्तर का

